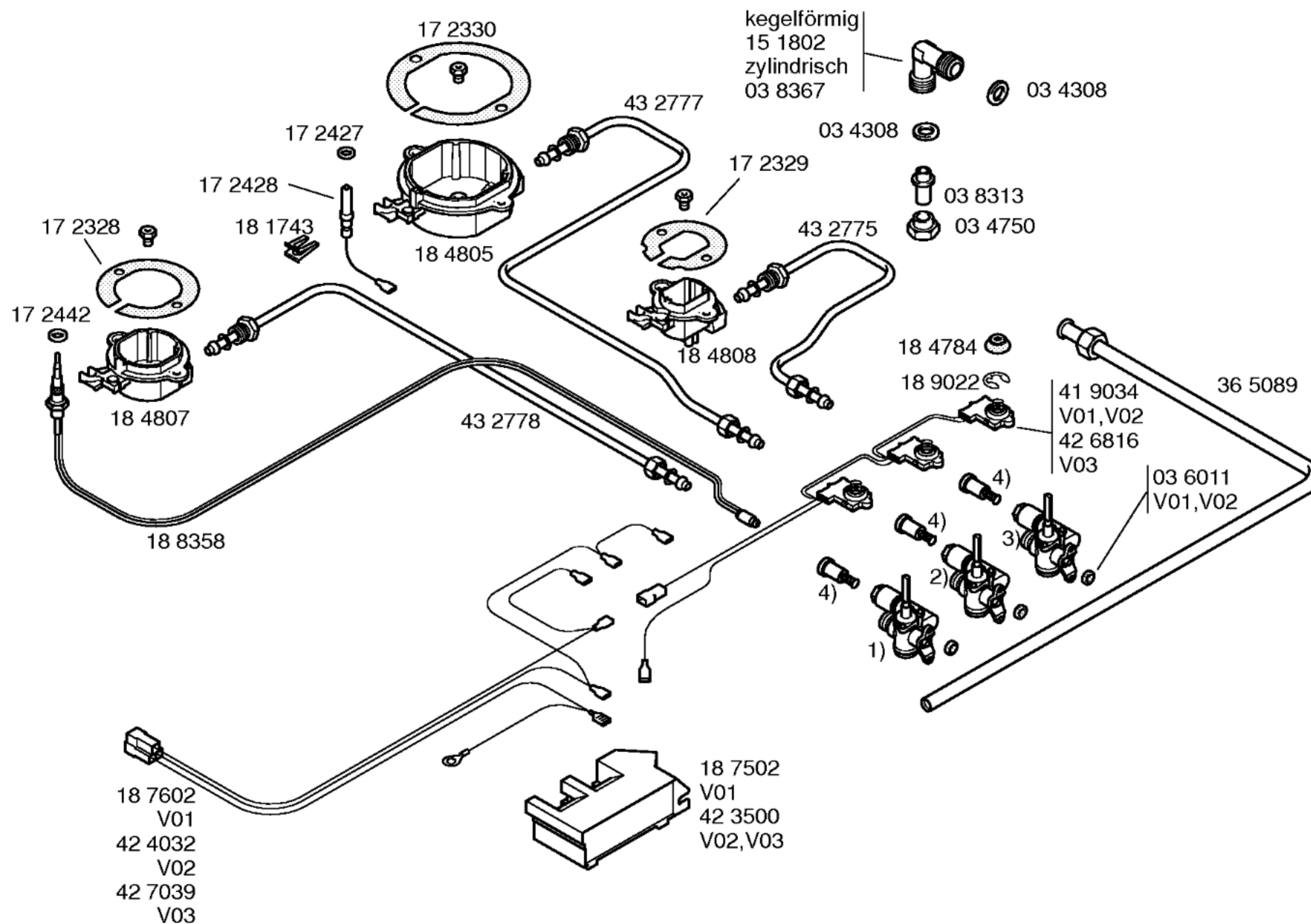


Gebrauchsanweisung
58 7100
(de,en,fr,nl,it,es,pt)



- 1) 18 8360
 V01,V02
 42 5471
 V03
- 2) 18 8359
 V01,V02
 49 4431
 V03
- 3) 18 8361
 V01,V02
 42 5469
 V03
- 4) 42 1258

Conj. transformación:
 G30 28 mbar
 41 6319
 G20 20 mbar
 18 7638