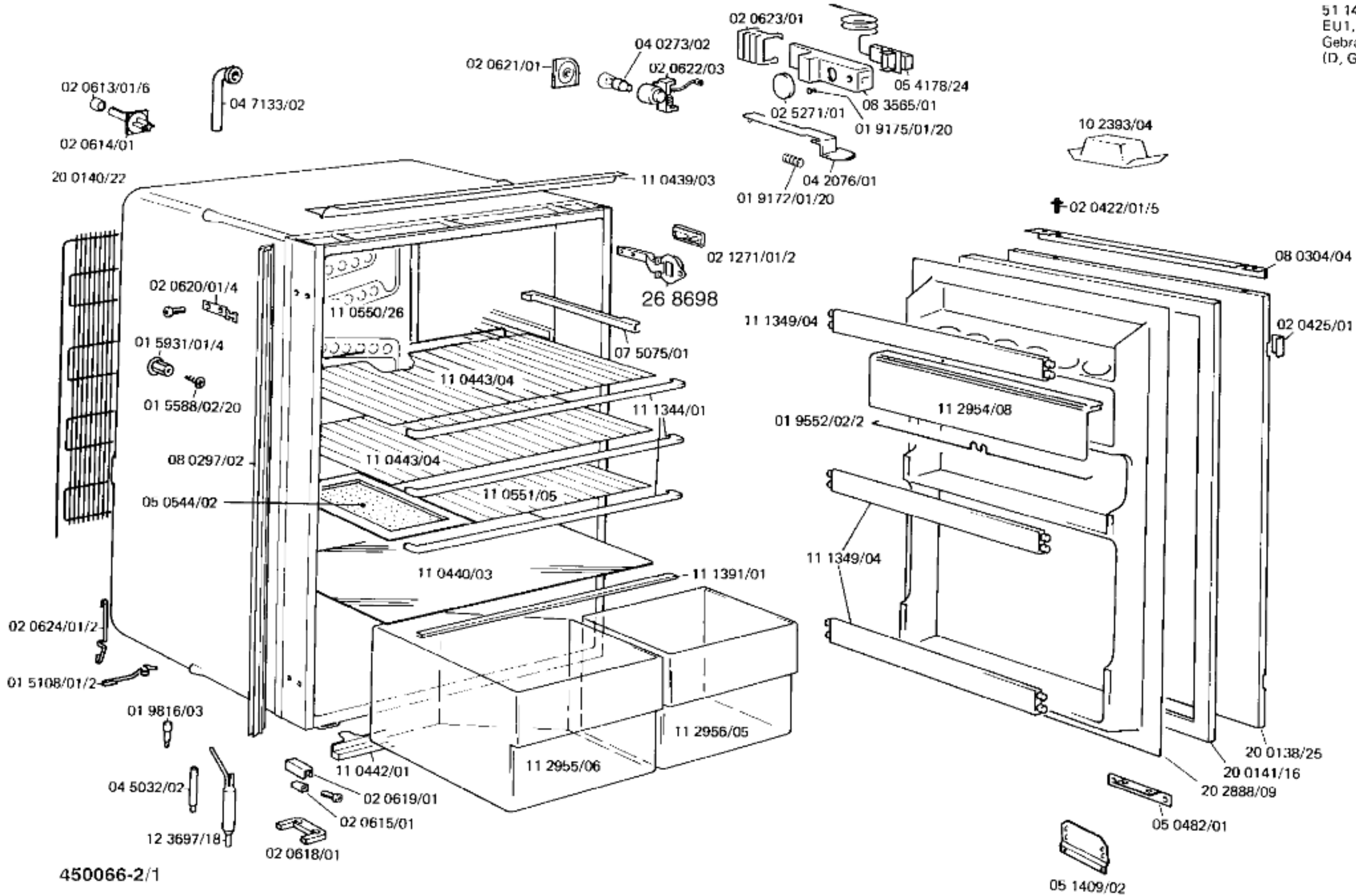
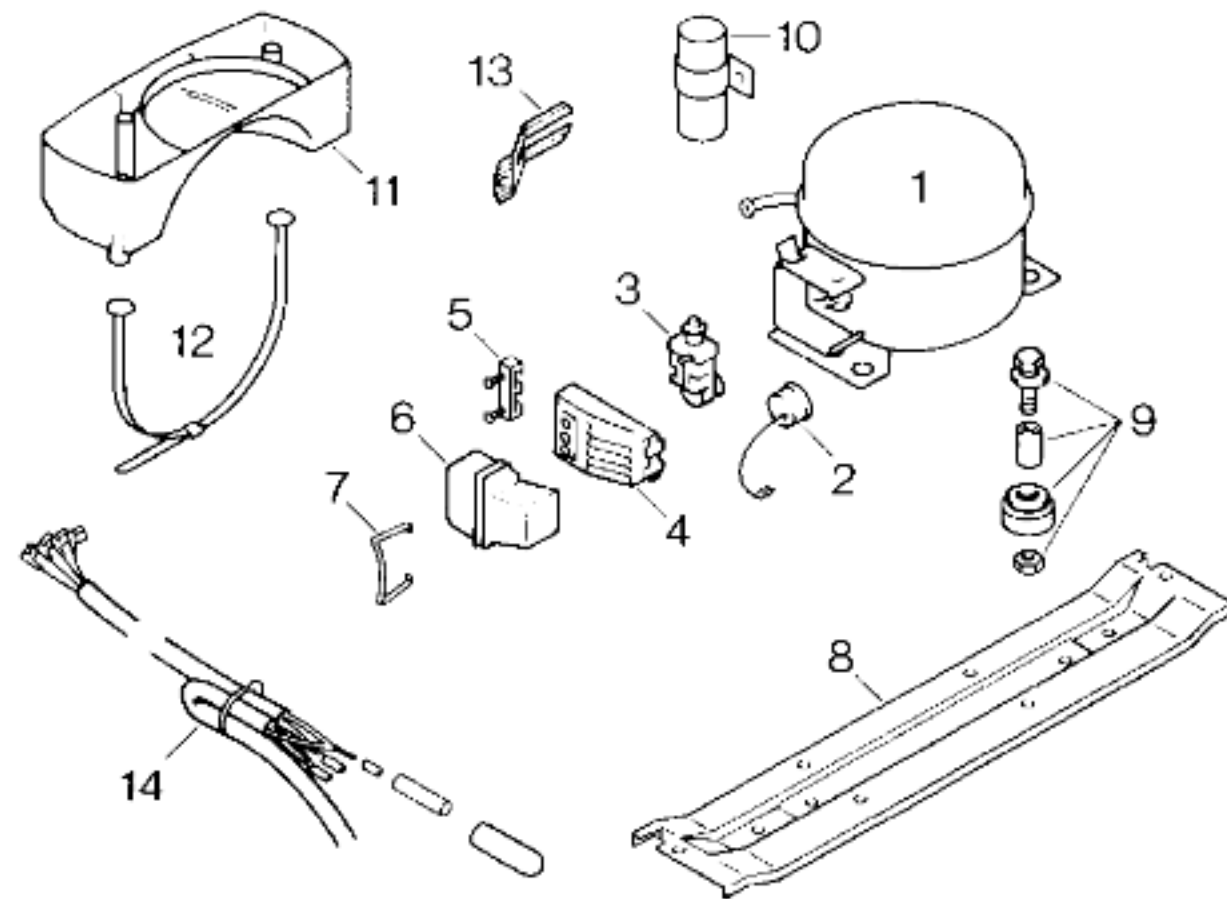


51 1421/00  
 EU1, EU2  
 Gebrauchsanweisung  
 (D, GB, F, I, NL, E)





## TECHNISCHE DATEN / TECHNICAL DATA / DONNÉES TECHNIQUES

Verdichter/Compressor/Compresseur		Danfoss			
Typ/Type		TL 3 A			
Förderleistung/Delivery/Débit	l/h	576			
Anlaufstrom/Starting current/Cour. de démarrage	A	7,2			
Widerstand/Resistance/Résistance	Hi/main/prin. $\Omega$	31,7			
	Hi/aux $\Omega$	17,0			
Temp. Regler/Thermostat		M + J			
Typ/Type		TF			
Reglerstellung/Position		kalt	warm		
Schaltwerte/Switching values/ Valeurs de commutation	„ein“ „aus“ („abtauen“ od.)	+ 4 - 26,5	+ 4 - 13		
Füllmenge/Fill.quantity/Charge	R12	g	90		
Anschlußwert/Conn.load/Puiss. connectée		W	90		
Heizung/Heater/Chauffage					
Widerstand/Resistance/Résistance		$\Omega$			
Leistung/Power/Puissance		W			
Ventilator/Blower/Ventilateur					
Widerstand/Resistance/Résistance		$\Omega$			
Magnetventil/Magnetic valve/Electrovanne					
Widerstand/Resistance/Résistance		$\Omega$			
Spannung/Voltage/Tension		V			

Pos.	EU1, EU2		
	Danfoss		
1	14 0080/44		
2			
3	02 0108/27		
4			
5	02 1361/04		
6	05 1413/06		
7			
8	11 0437/04		
9	05 0166/05/4		
10			
11	11 1243/01		
12			
13			
14			