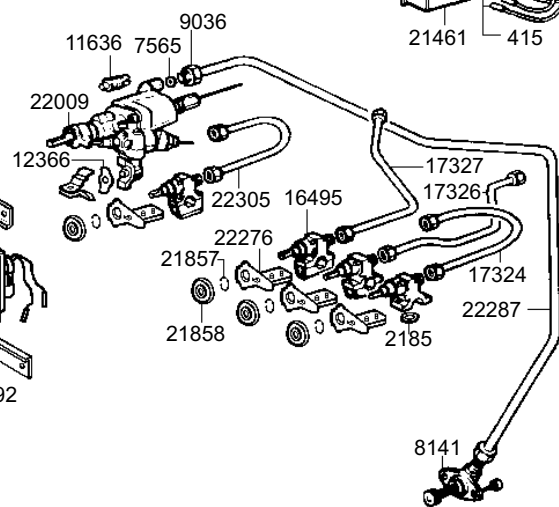
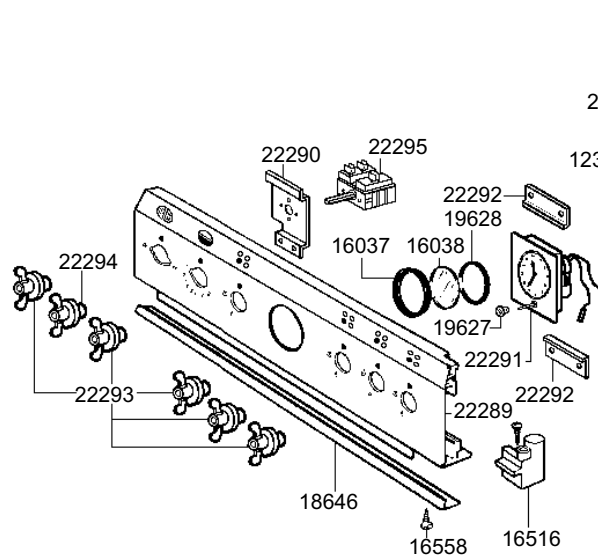
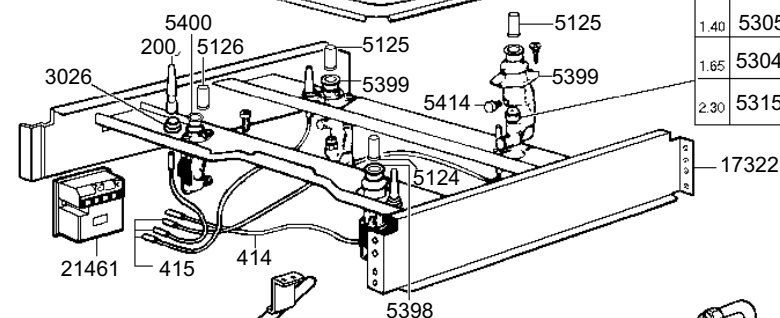


GAS Ø	CITTA'	GAS Ø	METANO	GAS Ø	LIQUIDO
1.40	5305	0.77	5300	0.53	5303
1.65	5304	0.95	5299	0.62	5302
2.30	5315	1.35	5298	0.87	5301



GAS Ø	CITTA'	GAS Ø	METANO	GAS Ø	LIQUIDO
2.60	7553	1.40	7557	0.93	7552