



ELECTROLUX HOME PRODUCTS PTY LTD
ABN 51 004 762 341

Technical Publication N° CG197.doc

Issue: 1
Date: 5/11

WEB SITE ADDRESS: www.partnship.com.au

WESTINGHOUSE

GAS COOKTOP

MODEL:

GHR795S
PNC 943253737

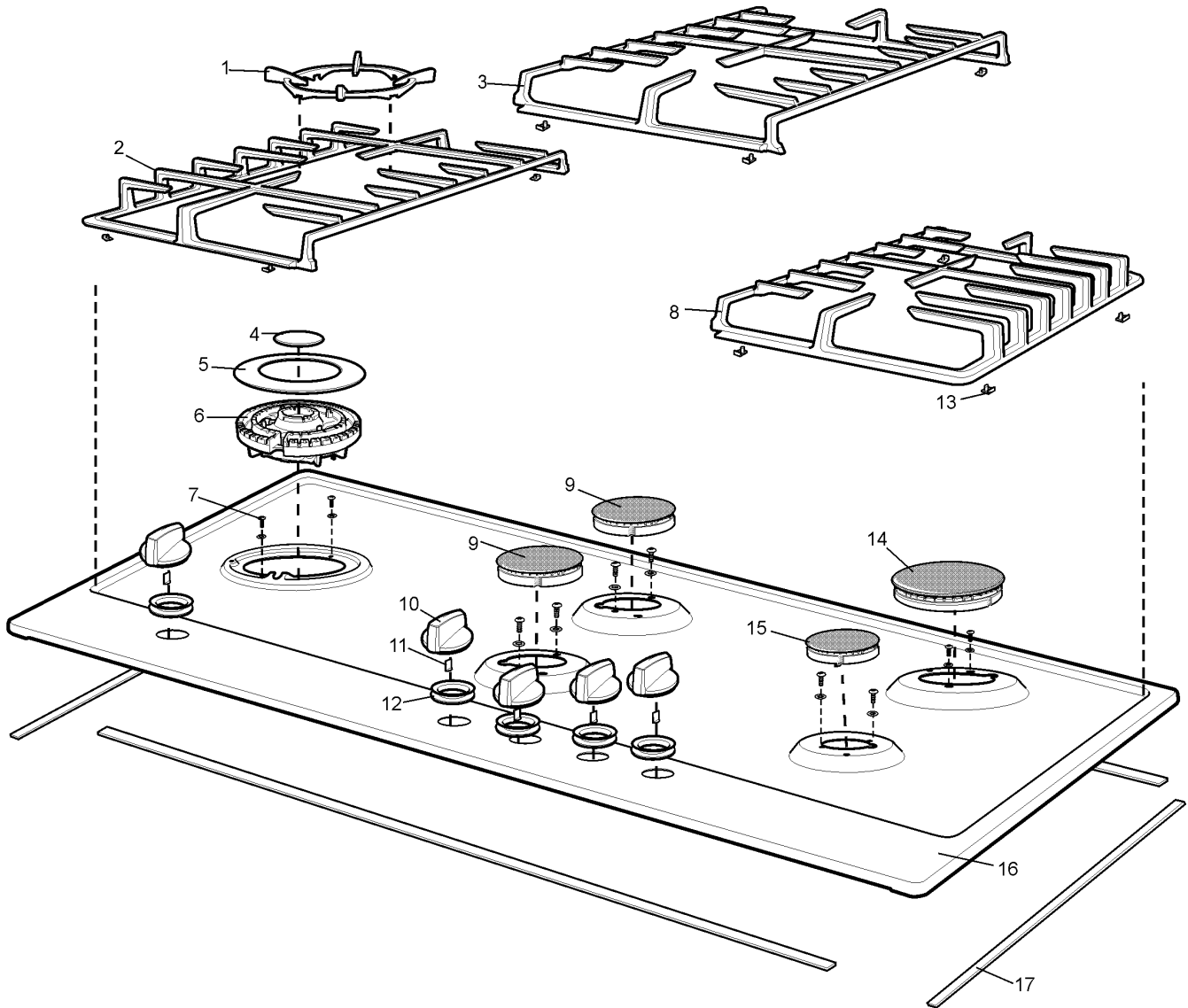
First Built Dates:	
GHR795S	5/11

CONTENTS	PAGE Nº
FIRST BUILT DATES	2
CONTENTS	3
HOB ASSEMBLY	4 - 5
BURNER BOX ASSEMBLY	6 - 7
CONVERSION KIT	8 - 9
CIRCUIT DIAGRAM	10

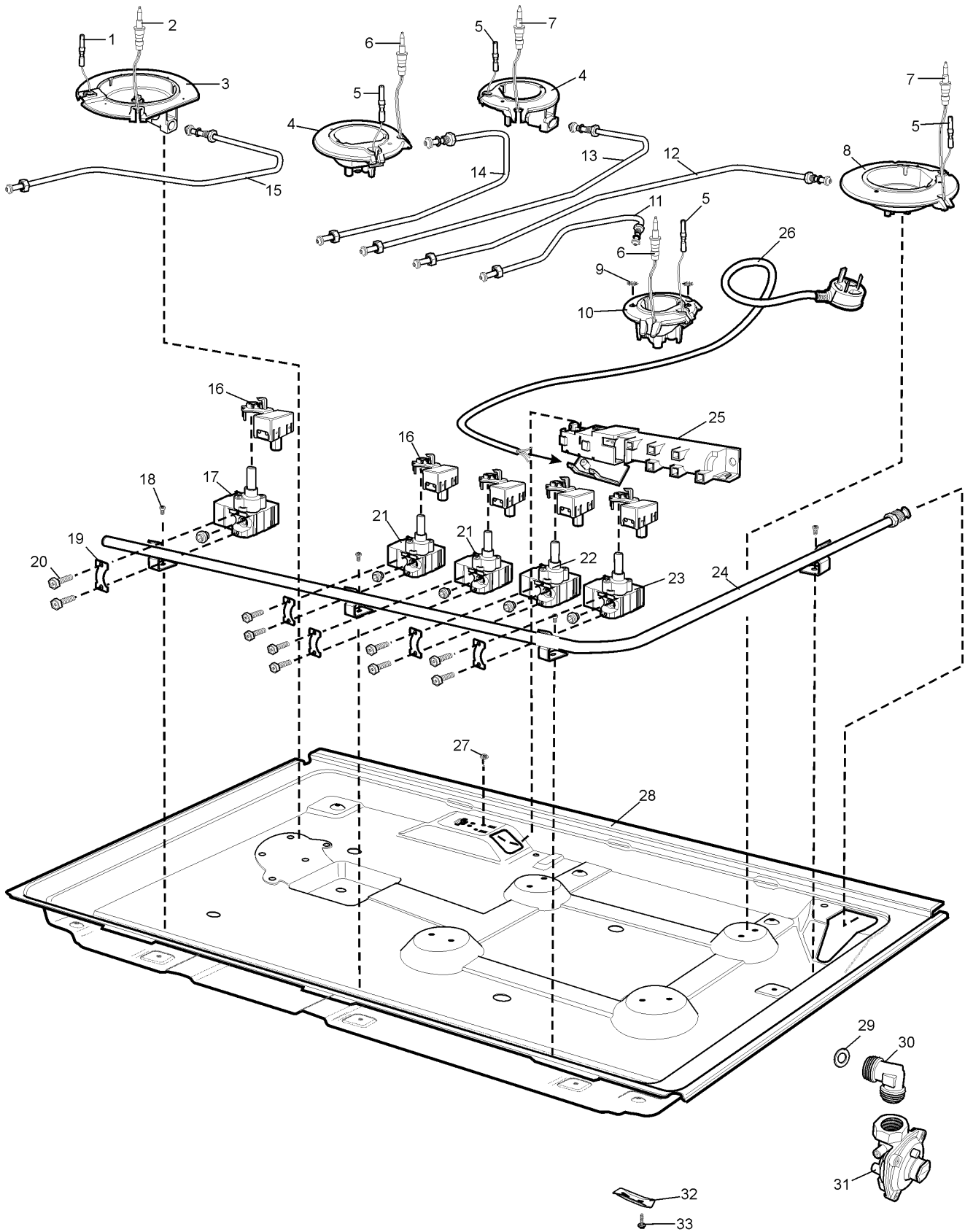
NOTE: In Parts Listings

N.I. = Not Illustrated
N.P.A. = No Part Available
N.P.N. = Not Used on this Model

EX. VIEW DRAWING 6652
HOB ASSEMBLY



ITEM	PART N°	DESCRIPTION Ex 6652	QTY
1	305 4398 00	TRIVET WOK CROWN CAST	1
2	305 4310 00	TRIVET CAST L/H 90 W/HOUSE	1
3	305 4311 00	TRIVET CAST CENTRE 90 W/HOUSE	1
4	305 4316 00	BURNER CAP MATT INNER WOK	1
5	305 4317 00	BURNER CAP MATT OUTER WOK	1
6	357 7259 05	TRIPLE CROWN WOK BNR CYL MACH	1
7	354 3202 01	SCREW 2.9 X 13 PAN T10 ZP PTFE	10
8	305 4312 00	TRIVET CAST R/H 90 W/HOUSE	1
9	305 3818 00	BURNER CROWN/CAP S/R MATT CYL	2
10	305 5524 02	KNOB S/S PAINT W/H GAS C/TOP (INC ITEM 11)	5
11	N.P.A.	CLIP KNOB SPRING (PT OF ITEM 10)	5
12	355 6112 01	GROMMET HOB - NFR	5
13	305 4388 00	FOOT TRIVETT	13
14	305 3819 00	BURNER CROWN/CAP RAP MATT CYL	1
15	305 3817 00	BURNER CROWN/CAP AUX MATT CYL	1
16	305 4379 00	HOB S/STEEL W/H 90 SCREEN FSG	1
17	356 5189 05	SEAL MASTIC - 700MM (X 4 PER PACK)	1
N.I.	305 4502 00	ARROW CLIP IGNITE BLACK	3



ITEM	PART N°	DESCRIPTION Ex 6654	QTY
1	357 0406 08	PLUG SPARK WOK 500MM ENAMELLED	1
2	357 0564 01	T'COUPLE TT ELUX BRNR WOK 275	1
3	0004 008 445	BURNER BODY ASSY WOK IGN NG	1
4	357 7298 48	BURNER BODY ASSY S/RAP IGN NG	2
5	357 0448 15	PLUG SPARK 600 MM ENAMELLED	4
6	357 0563 01	T'COUPLE TT ELUX BURNER 275	2
7	357 0563 02	T'COUPLE TT ELUX BURNER 500	2
8	357 7298 42	BURNER BODY ASSY RAPID IGN NG	1
9	*354 3212 09	WASHER S/P EXTERNAL 4.3 X 8 ZP	2
10	305 4501 00	BURNER BODY ASSY AUX IGN NG	1
11	305 4367 00	TUBE BURNER 90 IGNITE FSG RF	1
12	305 4366 00	TUBE BURNER 90 IGNITE FSG RR	1
13	305 4365 00	TUBE BURNER 90 IGNITE FSG LR	1
14	305 4364 00	TUBE BURNER 90 IGNITE FSG LF	1
15	305 4369 00	TUBE BURNER 90 IGNITE FSG WOK	1
16	°305 4427 00	SWITCH HARNESS 5P BSI IGNITE	1
17	305 4486 03	VALVE GAS BSI FSG WOK BLACK	1
18	354 3242 02	SCREW SPIRAL 4 X 6 PAN T10 ZP	4
19	305 4291 00	CLAMP GAS VALVE BSI FSG	5
20	0750 003 026	SCREW M4 X 16 HEX ZC	10
21	305 4486 01	VALVE GAS BSI FSG SEMI RAP BL	2
22	305 4486 02	VALVE GAS BSI FSG RAPID RED	1
23	305 4486 00	VALVE GAS BSI FSG AUX GREEN	1
24	305 4279 00	RAIL GAS IGNITE 90	1
25	357 2093 01	IGN & TERM BOX 6P - 240V ISPRA	1
26	305 4292 00	CABLE - ELECT SUPPLY IGNITE	1
27	*354 3201 05	SCREW M4 X 6 HEX T20 ZP	1
28	305 4289 00	BOX BURNER 90 IGNITE	1
29	0115 009 011	WASHER SEALING	1
30	305 4584 00	ELBOW GAS INLET 1/2" MALE/MALE	1
31	0294 001 032	REGULATOR GAS NG INTEG TEST PT	1
32	353 0284 01	CLAMP BURNER BOX IGNITE	4
33	46667	SCREW #8 X 3/4 PAN Z/P	6
N.I.	305 4492 00	KIT ASSY CLAMPS & INLET IGN 90 (INC ITEMS 29, 30, 32 & 33)	1
N.I.	354 3081 01	CLIP SPARK PLUG ELUX 125-8-356	5
N.I.	354 3194 01	GROUNDING REED	1
NOTE * ITEMS 9 & 27 MUST BE FITTED PROVIDES AN EARTH			
NOTE ° LOCTITE HAS BEEN USED TO ENSURE IGNITION SWITCHES REMAIN CORRECTLY SEATED DURING TRANSIT. WHEN RE-FITTING SWITCHES LOCTITE IS NOT REQUIRED.			

Gas Conversion – Important

NOTE: THIS KIT MUST BE FITTED BY A LICENSED GAS FITTER.
A CERTIFICATE OF COMPLIANCE MUST BE SUPPLIED TO BE KEPT BY THE CUSTOMER.

Please follow the procedure below if a conversion to LPG or NG is required.

1. Remove the hotplate burners to access the hotplate injectors.
2. Replace the injectors with the appropriate injectors. (see table below).
3. Unscrew the hex nut from the regulator. The hex nut, brass washer and nylon insert will disengage from the regulator as an assembly.
4. Unclip the nylon insert from the nut assembly by rotating the insert 1/4 turn and pulling it free. (Figure 2)
5. Correctly orientate the insert and clip back into position. (Figure 3)
6. Refit the hex nut assembly to the regulator ensuring that it is fully screwed down.
7. Turn on the gas supply and at each new connection, check for leaks using soapy water.

8. The operation of the regulator can be confirmed by connecting a manometer to the pressure test point located on the side of the regulator body. (Fig 1) With the appliance operating check the outlet pressure. (see table below)

- When all burners of the appliance are operating at maximum,
- When the smallest burner of the appliance is operating at minimum.

9. One by one, turn the knobs to minimum and adjust the bypass screw (accessible when the knob is removed) until a small stable flame results. Turn the knob to maximum and then back to minimum to ensure that the correct minimum flame is maintained.

10. Attach the correct sticker to the cooker, near the gas supply inlet. (Remove or cover the old sticker)

Burner Type	Natural Gas (Nominal test point pressure: 1.00kPa)	LPG (Nominal test point pressure: 2.60kPa)
Small	1.00	0.55
Medium	1.35	0.70
Fish	1.45	0.78
Large	1.60	0.90
Wok	1.75	1.00

Fig 1

Hex nut assembly fully screwed down.

Pressure Test Point.

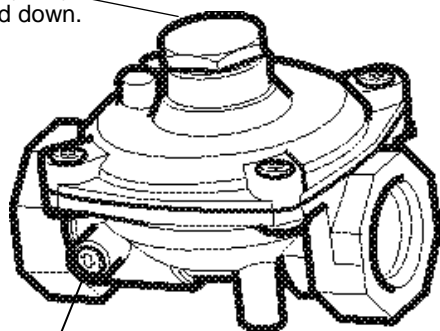


Fig 2

Hex nut assembly removed from regulator and insert disassembled.

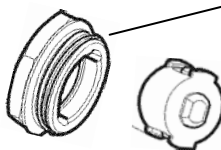
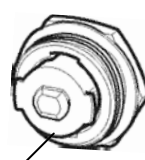
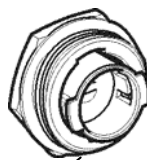


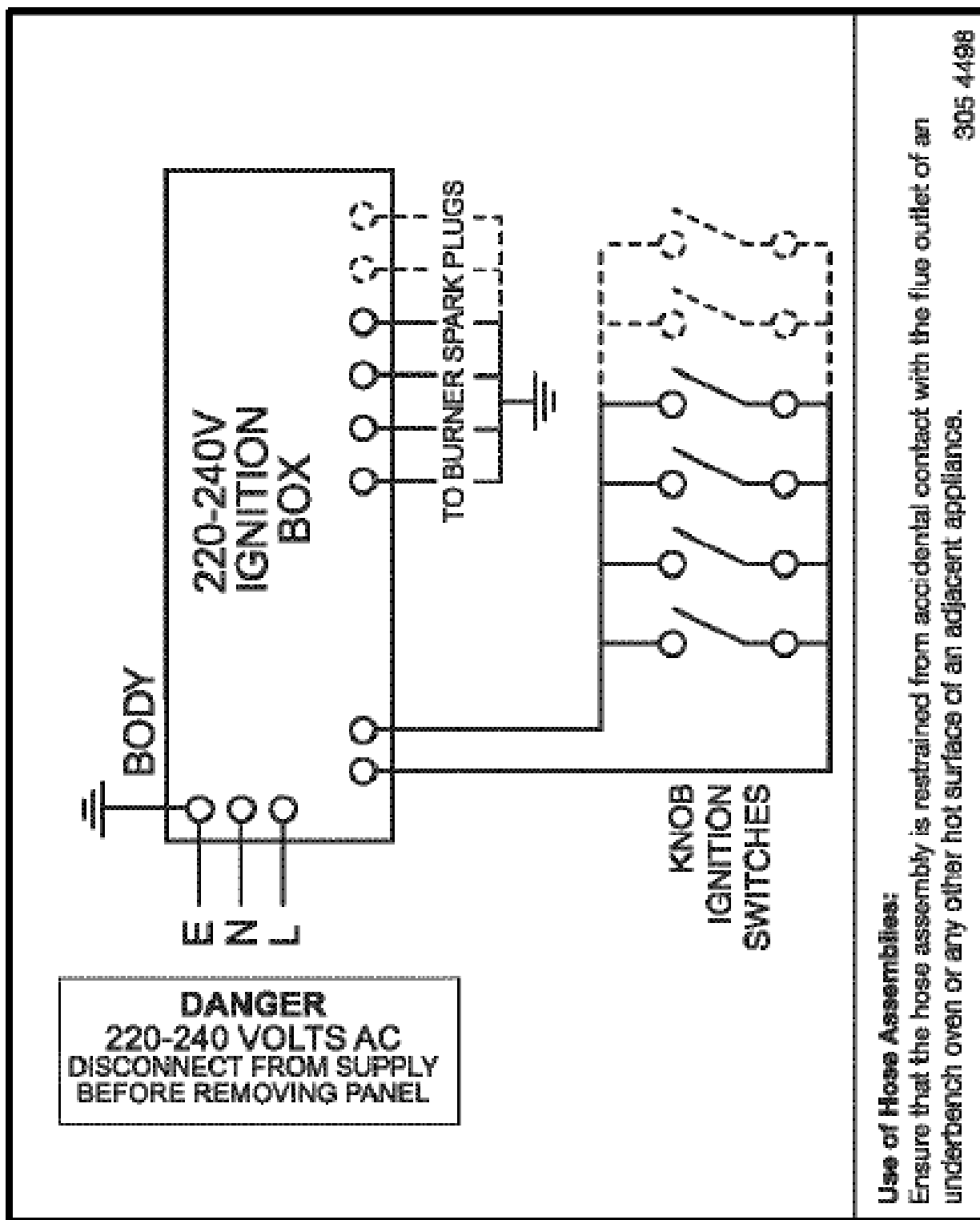
Fig 3

Insert orientated for natural gas operation.

Insert orientated for LPG operation.



Kit Part N° ES6013		
PT N°	DESCRIPTION	QTY
0131 002 100	NIPPLE INJECTOR LP/NG 1.0 MM	1
0131 002 135	NIPPLE INJECTOR SEMI R NG 1.35 MM	2
0131 002 406	NIPPLE INJECTOR FISH NG 1.45 MM	1
0131 002 393	NIPPLE INJECTOR RAPID NG 1.60 MM	2
0131 002 403	NIPPLE INJECTOR WOK NG 1.75 MM	1
0131 001 148	NIPPLE INJECTOR AUX LP 0.55 MM	1
0131 001 149	NIPPLE INJECTOR SEMI R LP 0.70 MM	2
0131 001 186	NIPPLE INJECTOR RAPID LP 0.90 MM	2
0294 001 032	REGULATOR GAS NG INTEG TEST PT	1
0296 004 103	STICKER GAS TYPE LPG	1
0296 004 100	STICKER GAS TYPE NG	1
ES6012	INSTRUCTION SHEET	1

**WARNING**

IT IS ILLEGAL FOR PERSONS OTHER THAN LICENSED ELECTRICAL MECHANICS OR PERSONS AUTHORISED BY LEGISLATION TO WORK ON THE FIXED WIRING OF ANY ELECTRICAL INSTALLATION. PENALTIES FOR CONVICTION ARE SEVERE.

IMPORTANT SAFETY NOTICE

This diagram has been prepared for use by electrically qualified service technicians. Electrolux cannot be held responsible for the interpretation of its service publications nor for any injury or damage that may occur in connection with their use.