



ELECTROLUX HOME PRODUCTS PTY LTD
ABN 51 004 762 341

Technical Publication N° CE338

Issue: 1
Date: 6/08

WEB SITE ADDRESS: www.partnship.com.au

WESTINGHOUSE

ELECTRIC COOKTOP

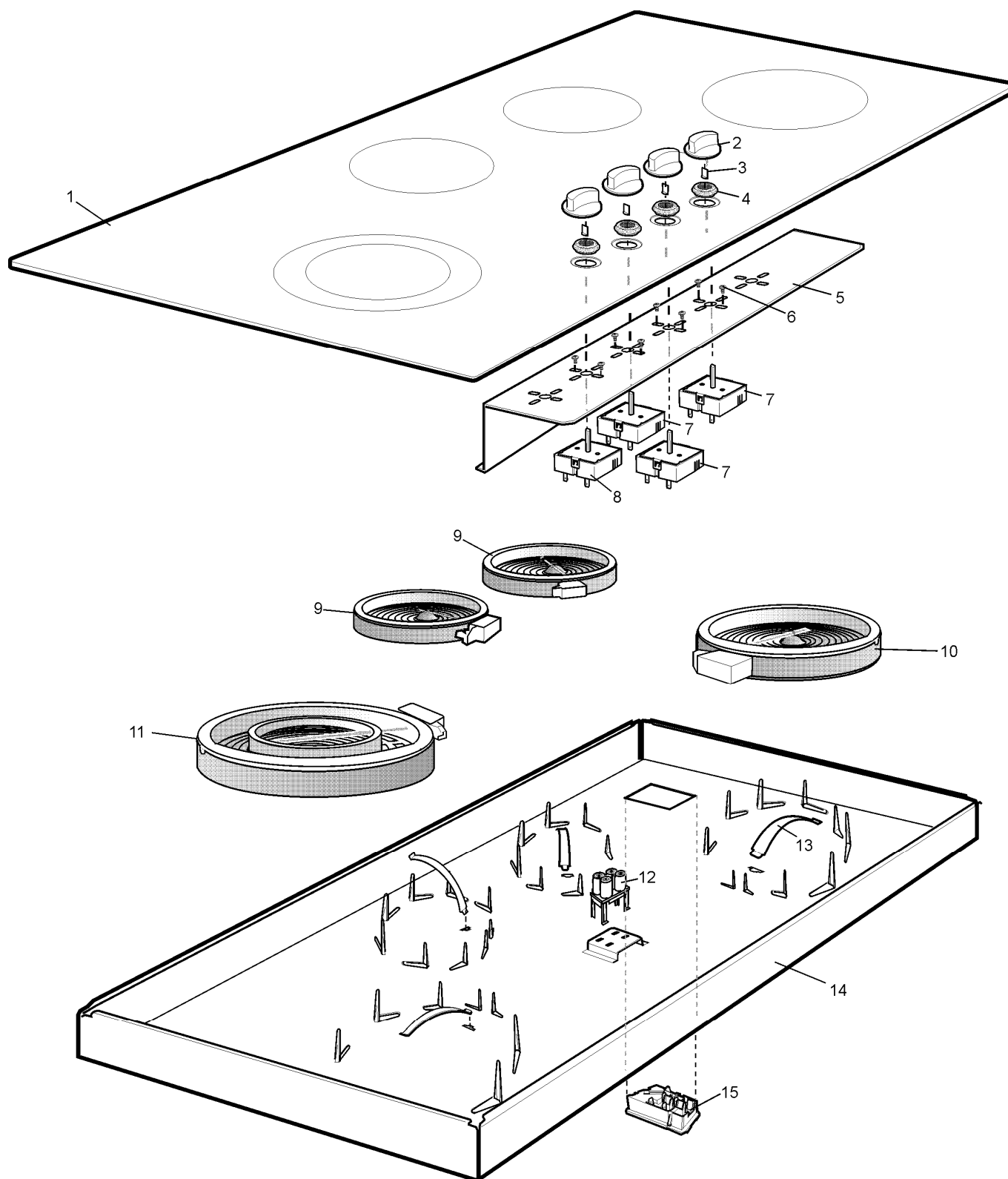
MODEL:
PHP395U
PNC 949163089

First Built Dates:	
PHP395U	5/08

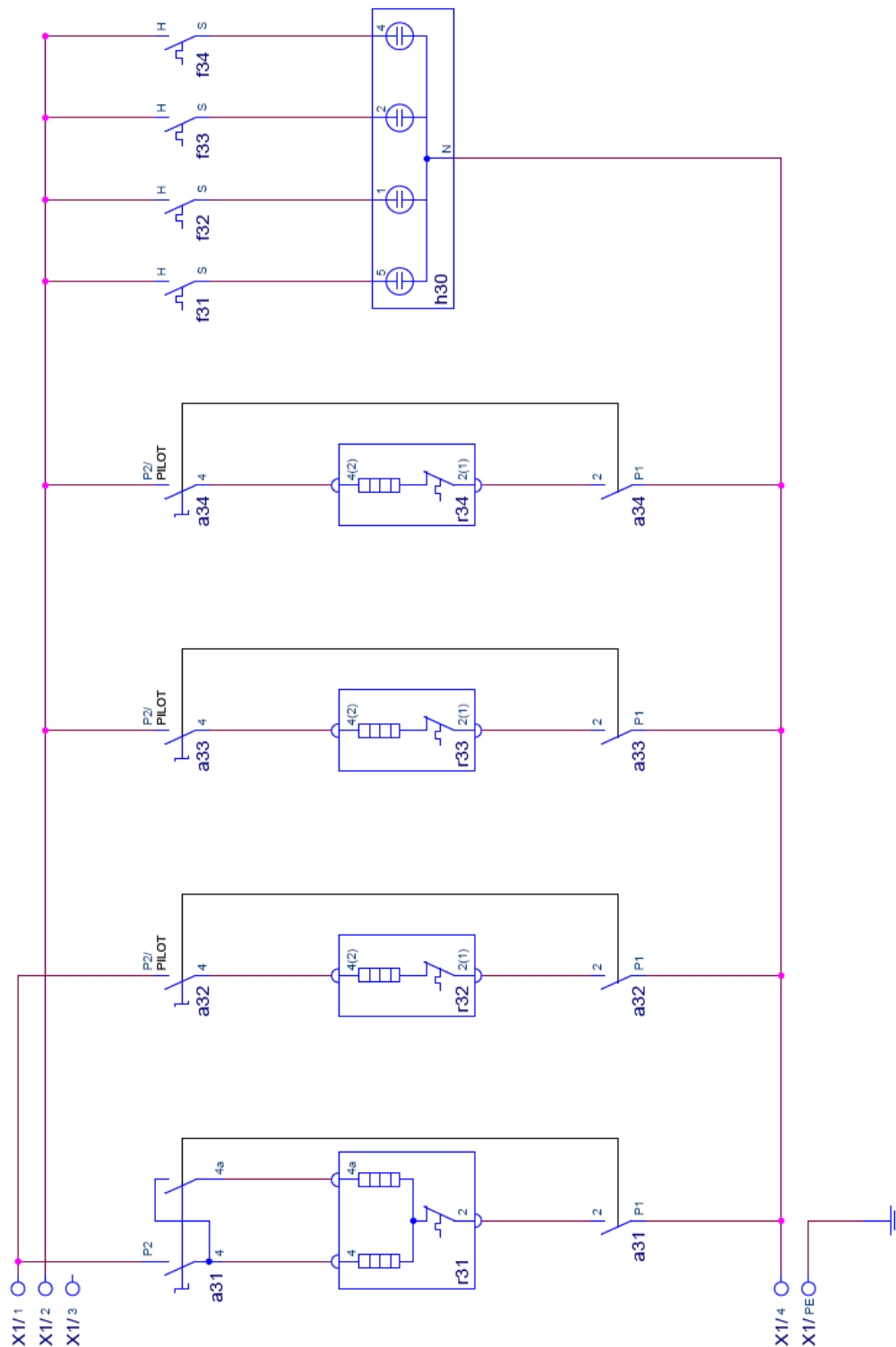
CONTENTS	PAGE Nº
FIRST BUILT DATES	2
CONTENTS	3
COOKTOP ASSEMBLY	4 - 5
CIRCUIT DIAGRAM	6

NOTE: In Parts Listings

N.I. = Not Illustrated
N.P.A. = No Part Available
N.P.N. = Not Used on this Model



ITEM	PART N°	DESCRIPTION Ex 6211	QTY
1	305379314	GLASS & FRAME ASSY	1
2	305470101	KNOB BLACK W/HOUSE ELEC (INC ITEM 3)	4
3	29143982	KNOB SPRING (PT OF ITEM 2)	4
4	387316100	SEALING SOCKET	4
5	387372600	SWITCH SUPPORT	1
6	319224001	SCREW C/S M4 X 7	8
7	3150788-23/4	ENERGY REGULATOR 1-CIRCUIT	3
8	3051706-21/0	ENERGY REGULATOR 2-CIRCUIT	1
9	3740635-21/8	RADIANT HEATER 145MM 1200W	2
10	3740636-21/6	RADIANT HEATER 180MM 1800W	1
11	3740640-21/8	RADIANT HEATER 210/120MM 2200W	1
12	330614521	RESIDUAL HEAT INDICATOR	1
13	387372900	SPRING	4
14	387373200	PROTECTION BOX	1
15	387362300	MAINS TERMINAL	1
N.I.	ACC014	SCRAPER CERAM GLASS	X
N.I.	ACC018	CERASEAL GLASS CT PROTECTOR	X
N.I.	ACC019	CLEANER CERAMIC COOKTOP	X

**WARNING**

IT IS ILLEGAL FOR PERSONS OTHER THAN LICENSED ELECTRICAL MECHANICS OR PERSONS AUTHORISED BY LEGISLATION TO WORK ON THE FIXED WIRING OF ANY ELECTRICAL INSTALLATION. PENALTIES FOR CONVICTION ARE SEVERE.

IMPORTANT SAFETY NOTICE

This diagram has been prepared for use by electrically qualified service technicians. Electrolux cannot be held responsible for the interpretation of its service publications nor for any injury or damage that may occur in connection with their use.