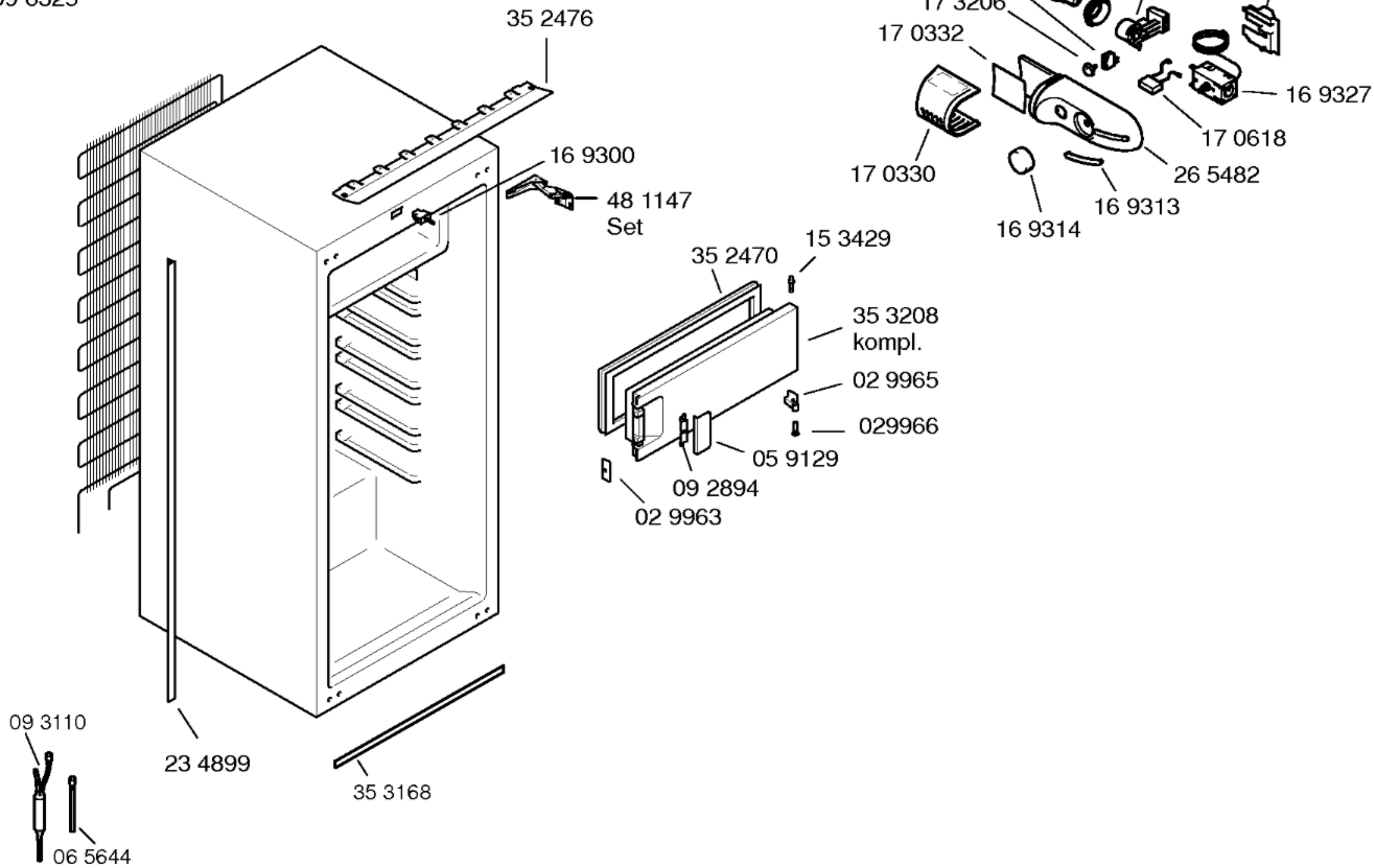




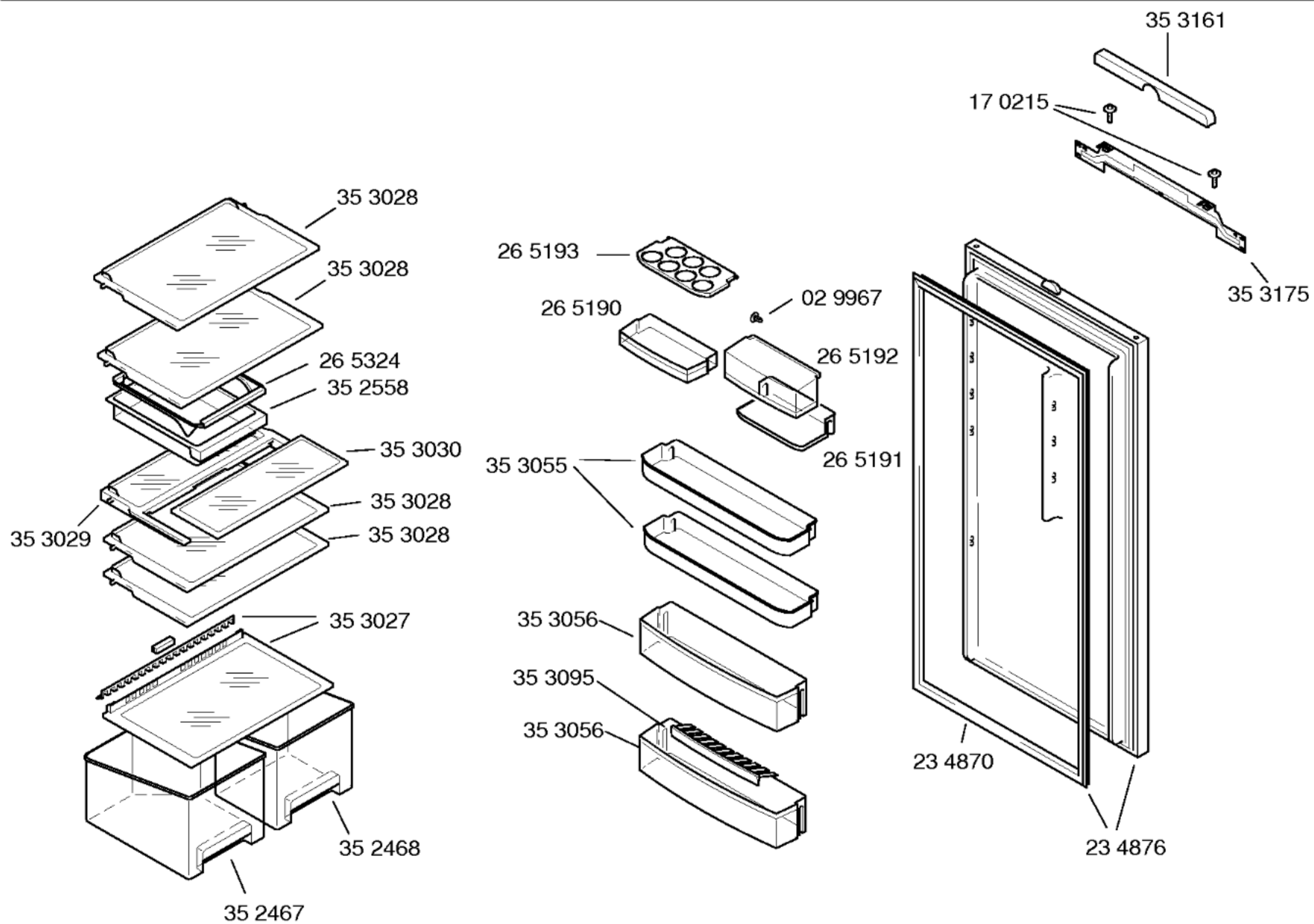
09 6325

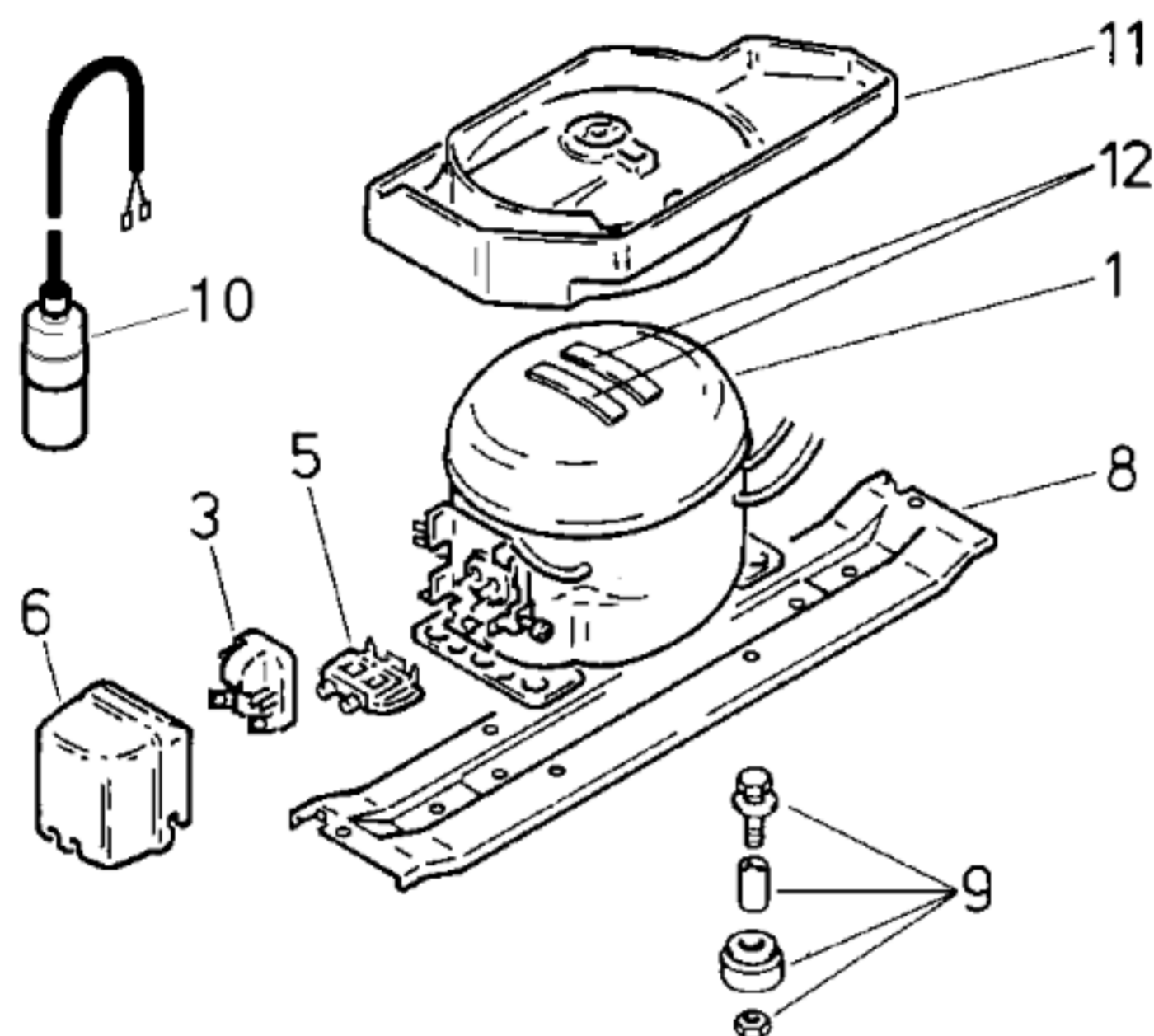


Gebrauchsanweisung
52 2548
(DE,EN,FR,IT,NL)

Montageanleitung
52 2494
(DE,EN,FR,IT,NL,DA,
NO,FI,SE,TR)

Beistellsatz
26 5163





Pos.	V01	V02	
	Aspera BPK 1084Y	Danfoss TLY 7KK2	
1	14 2101	14 2059	
2			
3	18 0819	15 1055	
4			
5	17 0882	15 0760	
6	17 0881	15 1072	
7	16 9319	16 9319	
8	26 4879	26 4879	
9	050166	0 50166	
10			
11	36 5099	36 5099	
12	05 6008	05 6008	

TECHNISCHE DATEN / TECHNICAL DATA / DONNEES TECHNIQUES			
Verdichter/Compressor/Compresseur		Aspera	Danfoss
Typ/Type		BPK 1084Y	TLY7KK2
Förderleistung/Delivery/Débit	l/h	1201	1168
Anlaufstrom/Starting current/Cour de démarrage	A	3,6	5,7
Widerstand/Resistance/Résistance	Ha/main/prin	W	29,6
	Hi/aux	W	39,1
Temp.–Regler/Thermostat		Ranco	
Typ/Type		K59	
Regelstellung/Position		kalt	warm
Schaltwerte/Switching values	"warm"	+4,0	+4,0
Valeurs de commutation	"kalt"	-32,0	-12,0
	"alarm"		
Füllmenge/Fill.quantity/Charge	R600a	*	
Anschlußwert/Conn.load/Puiss. connectée	W	79	71
Heizung/Heater/Chauffage			
Widerstand/Resistance/Résistance	W		
Leistung/Power/Puissance	W		
Ventilator/Blower/Ventilateur			
Widerstand/Resistance/Résistance	W		
Temp.–Regler/Thermostat			
Magnetventil/Magnetic valve/Electrovanne			
Widerstand/Resistance/Résistance	W		
Spannung/Voltage/Tension	V		

* siehe Typenschild